



www.servispece.cz

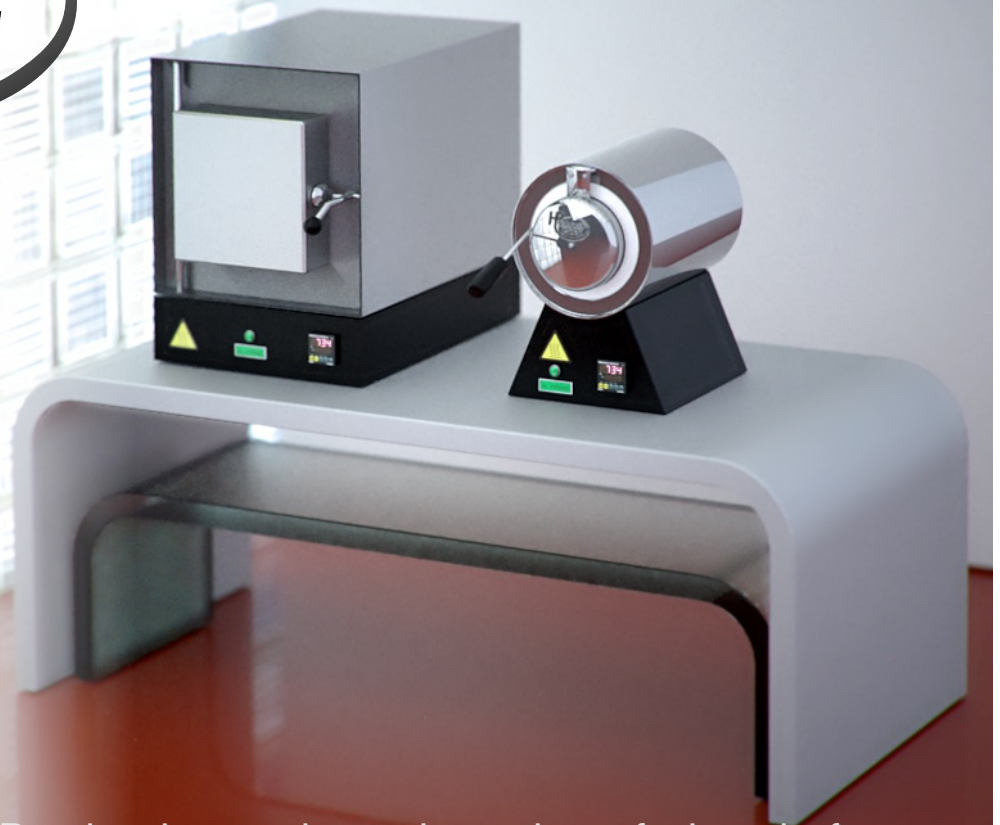
Manufacturing laboratory furnaces

Sales of kilns for ceramics, glass and Industry

Service of electric ovens for all domestic and foreign manufacturers throughout the Czech Republic

Production of resistive heating coils

Reconstruction and modernization of measuring and regulation systems.



Production, sale and service of electric furnace

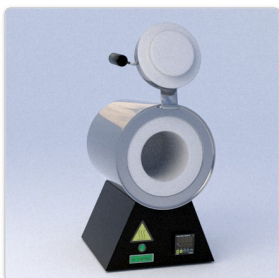


Laboratory oven ESP - 10

SIZE WxHxD / cm
External 40x54x60
Internal 17x17x30

TEMPERATURE 1200 °C
VOLTAGE 230V
POWER 3 kW

Kilns are made of stainless steel, the stand is painted stainless steel and electrically operated. Switching to heating furnace uses Solid State Relays SSR. They are quiet in operation, reliable and switchable at very short intervals for optimal temperature control during the firing process. Temperature sensing use high-quality S-type thermocouple (Pt/PtRh10).

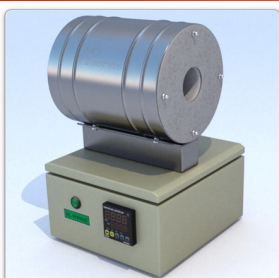
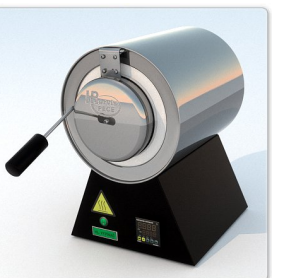


Laboratory oven ESP - 09

SIZE WxHxD / cm
External 27x40x35
Internal 11x12

TEMPERATURE 1100 °C
VOLTAGE 230V
POWER 1 kW

Ovens are made of stainless steel, the stand is painted stainless steel and electrically operated, Provides precise control by use of a programmable PID controller Fuji. Temperature sensing use high-quality S-type thermocouple (Pt/PtRh10)



Tube furnace LTP

SIZE WxHxD / cm

Custom

TEMPERATURE 1100 °C
VOLTAGE 230V
POWER 1 kW

Universal tube furnace, whose base is a ceramic tube wrapped around a heating coil. The sheath is made of stainless steel. Provides precise control of a programmable controller Fuji. Using the bracket can tilt the furnace to any position



Pavel Homola

Address: Na Kope ku 237
664 61 Rajhradice

Phone: +420 603 924 714

E-mail: homola@servispece.cz

http:// www.servispece.cz